



When you need to be there in an instant



www.eye2sky.co.uk

Virtually There

Communicating with personnel and providing support in increasingly remote and potentially hazardous locations is a constant challenge. Deploying skilled people to those remote locations is expensive, time consuming and an inefficient use of critical resources.

Our systems are fully interactive and provide Simultaneous Multi-Site Links (SMSL) offering full audio-visual and data communications, with secure links to our 'always-on' earth stations located around the world combined with global satellite coverage and ATEX certified intrinsically safe field ready hardware.

Seamless Integration

The eye2sky system will integrate seamlessly and securely with your existing IT infrastructure, ensuring efficient data transfer (e.g. SCADA), together with stable, secure internet access. We understand that reliable communication is an essential part of any Integrated Operations (IO) infrastructure.

A lifeline to critical technical resources at remote locations, fixed and mobile VSAT (Very Small Aperture Terminal) Satellite communication technologies provide this vital link.

To ensure that the integration of the eye2sky system is seamless, our systems are installed and overseen by a dedicated Project Manager providing a single point of contact throughout the installation process.

Safety First At Every Location

Using intrinsically safe field hardware and VSAT technology, the eye2sky system provides full end-to-end connectivity, that ensures efficient and effective use of skilled people and resources. Site safety is of paramount importance. This requires the consistent application of the correct processes and procedures, often overseen by experts who may need to be in two, or more, places at once.

Using eye2sky technology, an engineer based at a central location can access several worksites directly from their control centre office, supervise numerous data feeds and have real-time audio visual communications with the remote sites. This enables instant, authoritative advice to be communicated to the field team in any situation. It also provides the ability to record data for analysis and training after the event. Rapid, reliable transmission of field data to head office facilitates quicker analysis and response to potentially hazardous field situations when time is of the essence.

When you need to be there in an instant



Remote Site Communications



Any Location



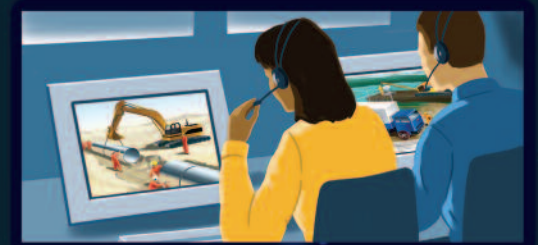
Ensure Best Practice



Hazardous Environments



Site Security



HOUSTON 08:00

Overview of site operations in real-time from a remote desert location in the Middle East. 24/7 monitoring of multiple sites with our SMSL system.



KUALA LUMPUR 21:00

Monitoring site activity in West Africa and offshore in the Gulf of Guinea. Keeping an eye on SCADA data streams.



PARIS 15:00

Watching the video feed offering live commentary. The engineers at Operations HQ would normally need to visit the site to share this sort of information.



Remote Site Communications

Using ATEX approved audio-visual equipment eye2sky technology keeps your field teams in touch with HQ. Reliable, always-on systems ensure that your field teams know that they can work in real-time with head office using voice, video and data communications.



Any Location

In the harshest environments the safety and security of the in-field team is of paramount importance, the ability to interactively monitor a remote site offers this peace of mind. Large packets of critical data can be transmitted from the remote site at any time, enabling the analysis of this data by experts at the Operations HQ.



Ensure Best Practice

Your company has spent time and money developing, deploying and ensuring best practice is observed and implemented across all locations. This can be effectively monitored and training can be conducted in real time without the need to constantly deploy central resources all over the world. This avoids the associated security risks and costs of travelling to remote locations.



Hazardous Environments

Communication is the vital element to ensure the job is done correctly and safely. Expertise may be needed at any location, the versatility of the eye2sky system will ensure that an expert can be 'Virtually There' anytime, anywhere.



Site Security

A fixed camera system can monitor permanent and semi-permanent worksites with portable systems, that can be transported to temporary field locations for short-term assignments. This means that even when the remote site is only active for a short time, it remains fully integrated into the communication system.

Features and Benefits

Peace of mind

- Instant site monitoring.
- Real-time video streaming.
- Video recording.
- Fixed and portable (integrated hands-free camera and microphone system).
- Simultaneous Multi Site Links (SMSL) with full camera control (Pan, Tilt, Zoom).
- Secure VPN connection.
- Out-of-band management system.
- Comprehensive spares package for remote locations.
- SCADA remote monitoring capability.

Cost efficiencies

- Data transfer.
- VoIP - Voice over Internet Protocol.
- Broadband internet connection.
- Reduction in expensive travel to site.
- Full Wi-Fi access.
- Two-way communications with HQ experts.
- Reduced asset downtime with rapid access to experts.

Safety

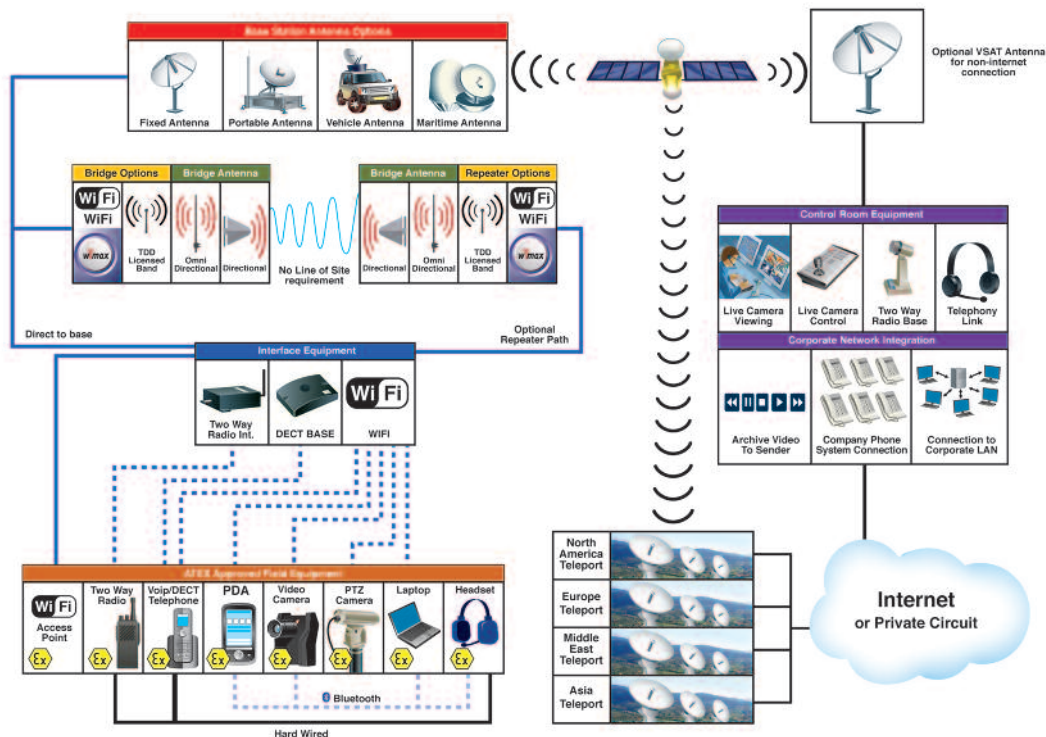
- Intrinsically safe operator hardware.
- Security monitoring.
- Comprehensive safe practice equipment training.

Leisure - 'off-duty' benefits

- Keep in touch with family and friends.
- Personal e-mail access.
- General internet / social networking.
- Video calls via Skype etc.
- Downloads - movies, music, e-books.

Professional approach

- End to end project managed solution.
- Professional system installation.
- Operator training - (on-site or off-site).
- 24/7/365 Technical Support.



Some of our feedback

“This system will allow us to offer our customers a tailor made solution for enhanced security and safety.”

“We were impressed with the level of expertise, commitment and technical support received.”

“Being able to communicate with the remote site engineers whilst monitoring a live video feed and transferring data at the same time will be extremely advantageous to us.”

“The possibilities with this technology for remote operations management, emergency response and security management is a real game changer.”

“This satellite link and data streaming to remote locations combined with the robust and modular design of the technology reinforced the positive view of the Shell representatives.”



Eye2Sky Ltd, Crabtree Studios, Crabtree Lane,
Headley, Hampshire, GU35 8QB, UK

T : +44 (0) 1428 770 450 **E** : info@eye2sky.co.uk **W** : www.eye2sky.co.uk