



Reach Beyond.

Mobile Video Collaboration



Another Innovation by Librestream



Imagine...

A world where you can connect to people outside of your physical walls and videoconferencing rooms. A world where you can share live video, voice and images from a factory floor in China, an office in Alaska, a nursing station in a small town, or an airstrip in London with experts located at your head office. Now you can Reach Beyond your four walls with Librestream's patented Onsight mobile collaboration system.

Onsight is the only mobile collaboration solution that fully connects internal experts to remote locations in real time. Using Onsight, an internal expert can see live video and share feedback with field staff, external suppliers or customers to assess operations or resolve issues immediately.

With Onsight, our clients have told us they have:

- Reduced overall travel expenses
- Increased productivity of key internal resources
- Solved problems faster at much less expense
- Sped up overall project delivery
- Monitored remote sites effectively
- Improved quality and customer satisfaction
- Delivered internal training and mentorship
- Leveraged their experts into more field situations

The Onsight Mobile Collaboration system is comprised of three main components:

- Librestream's **Onsight mobile devices** including rugged and hazardous location certified models;
- **Onsight Expert**, the desktop software that runs on the computer of your subject matter expert; and
- **Onsight Management Suite**, software that provides your system administrators with centralized management tools for their Onsight system.

Encrypted Wireless Device



PC Collaboration Software



Together, these components provide a full mobile collaboration solution. Using Onsight, a field worker can quickly collaborate with an offsite expert through live video, voice and onscreen drawing using an intuitive hand-held, wireless device. Experts and field workers can resolve issues, fix problems, diagnose, or monitor field situations on the shop floor, customer site, in a remote health clinic or at the scene of an emergency.

Mobile Collaboration Devices

The Onsite system includes powerful and easy to use mobile devices that can immediately send live video and audio from a remote location to the desktop of an internal or external expert. Using the touch panel, field workers can view files sent by the remote experts and draw to pinpoint problem areas visually. Powered by the Onsite Mobile device software, the Onsite mobile collaboration devices are specifically designed to operate within various and often challenging field environments.

on sight 2000R

Onsite 2000R was engineered to perform in challenging environments such as the manufacturing plant floor and outdoor work sites. The Onsite 2000R has an IP64 enclosure rating providing real time video collaboration in rugged environments.



on sight 2000Ex

Onsite 2000Ex extends the power of mobile collaboration to extreme and potentially hazardous locations. In addition to the IP64 enclosure rating, this device has Class I, Division 2 and Zone 2 approvals for operation in these environments.



Features

- Hand-held wireless 802.11 b/g mobility
- Real time, high quality video stream for live collaboration
- 2-way VOIP audio with both speakerphone and headset support
- 2-way telestration (onscreen drawing) to highlight areas for discussion
- Recording and still image capture for archival and training purposes
- Outstanding optical performance with 10x optical zoom and 1 cm (1/2 inch) macro
- Built in illumination and automatic white balancing
- High resolution viewfinder with touch screen support
- Bidirectional image and video file sharing between the Onsite device and Onsite Expert client
- Optimized performance for low or variable bandwidth network environments
- Video/audio calls to standard SIP video conferencing endpoints
- Advanced security, encryption and authentication features
- FIPS 140-2 optional software client for additional security
- IP64 enclosure rating with chemical resistant exterior, ability to withstand 4 foot drop
- Class I, Division 2 and Zone 2 Approved (Onsite 2000Ex)

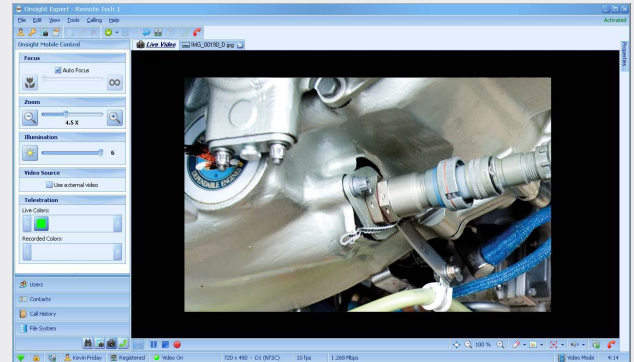
Mobile Collaboration Software



Onsight Expert is the mobile collaboration application that resides on the desktops of your internal experts. Onsight Expert immediately connects professionals with remote locations by showing live visuals from Onsight devices and engaging in 2-way audio and onscreen drawing with an Onsight device.

Features

- Connects to the Onsight devices immediately to receive high quality video or images, audio and onscreen drawing on the desktop
- Provides 2-way VoIP audio for integrated voice collaboration
- Includes full remote control of Onsight device features such as zoom and freeze frame
- Enables multi-expert calls with a 'one to many' feature or by launching Cisco WebEx
- Enables onscreen drawing / annotation to highlight areas quickly and effectively
- Includes viewfinder video and image sharing mode for low bandwidth settings
- Includes ability to take snapshots or record video for long term record keeping
- Exports recordings to Quick Time Movie formats for portability
- Provides secure communications through AES encrypted audio, video and data
- Windows Vista and Windows XP compatible

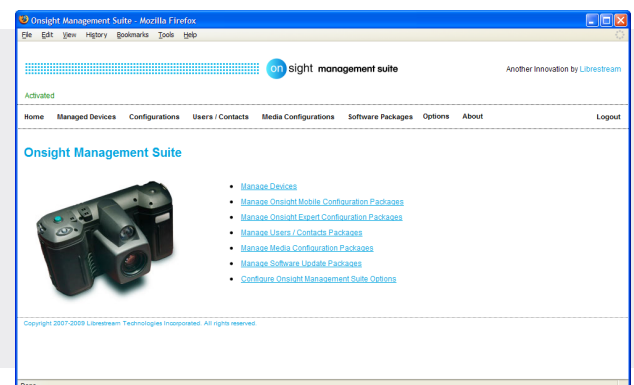


onsight management suite

Onsight Management Suite provides the tools your system administrator needs to efficiently manage your network of Onsight devices and Onsight Expert application endpoints through a web browser interface. Using Onsight Management Suite, enterprise administrators can view the status of all endpoints, create and apply system configurations, and manage and apply remote software updates.

Features

- Monitor the status of Onsight devices and Onsight Expert application endpoints
- Manage new endpoints that have been added to the network
- Create and modify packages for distribution to endpoints on the network such as configuration profiles, contact lists and software updates
- Control configuration profile elements such as media settings, wireless networks, power settings, radio channels, login security settings, SNMP and password policy
- Automatically push new configurations or software updates to endpoints on the network
- Track Onsight device and Onsight Expert usage levels and export data for analysis
- Windows server 2003 and 2008 compatible



Phone: +44 (0) 1428 770 450
Email: info@eye2sky.co.uk
Web: www.eye2sky.co.uk



Librestream
This Changes Everything.