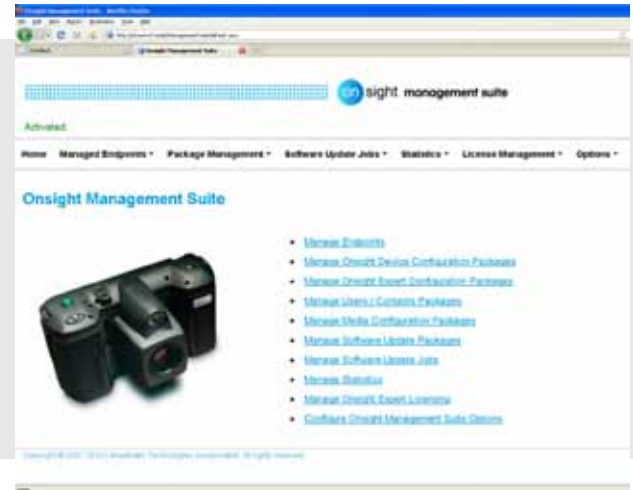


onsight management suite

Onsight Management Suite provides the tools your system administrator needs to efficiently manage your network of Onsight devices and Onsight Expert application endpoints through a secure web browser interface. Using Onsight Management Suite, system administrators can view the status of all endpoints, create and apply system configurations, manage and apply remote software updates, and access usage statistics.

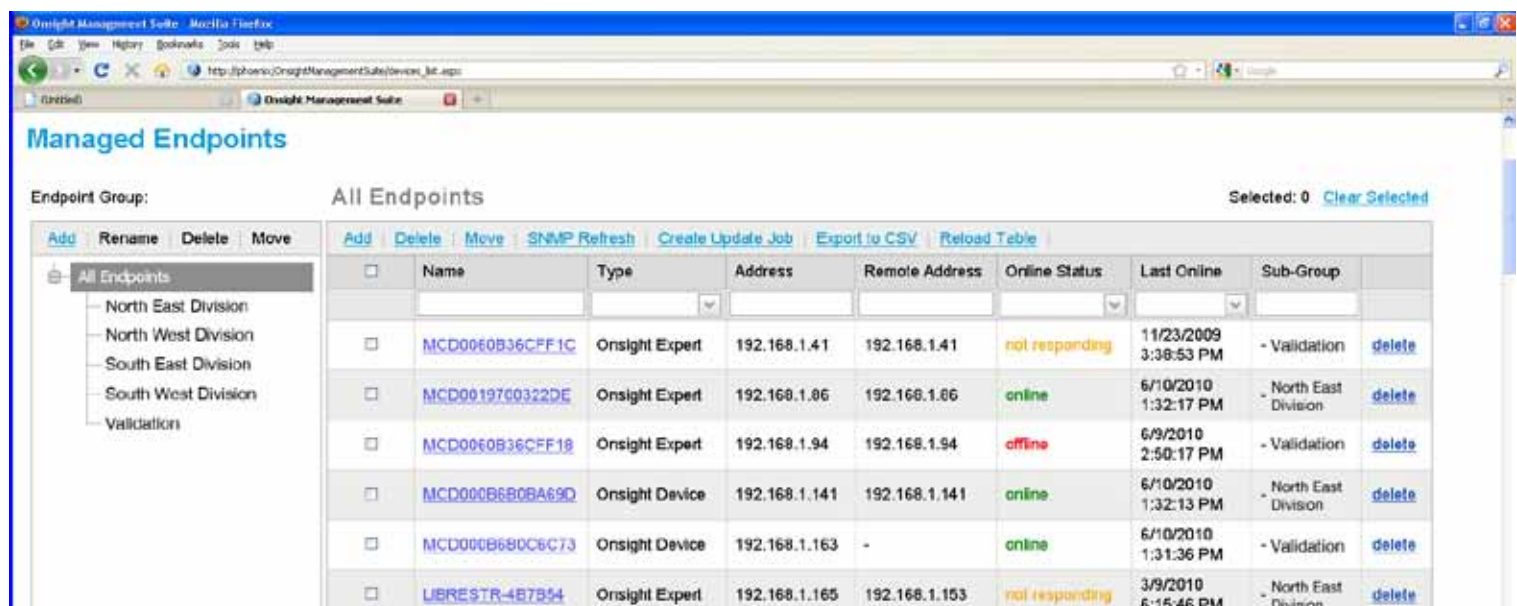
Features

- Monitor the status of Onsight mobile devices and Onsight Expert application endpoints
- Manage new Onsight endpoints on the network
- Create and modify packages for distribution to Onsight endpoints such as configuration profiles, contact lists and software updates
- Control configuration profile elements such as media settings, wireless networks, power settings, display, audio and call control, radio channels, login security settings, SNMP and password policy
- Automatically push new configurations or software updates to endpoints on the network
- Collect and export important usage statistics for analysis
- Windows server 2003, 2008 and XP Professional compatible



Endpoint Monitoring

Onsight Management Suite periodically communicates with registered Onsight endpoints to gather information such as the online/offline status of the device, call statistics during its last usage, software version, and the IP and MAC address of their network. It communicates with the remote endpoints using SNMP or a Web Service interface. Using Onsight Management Suite, administrators can quickly view the status of registered endpoints and export that data.



Endpoint Group:		All Endpoints							Selected: 0 Clear Selected	
Add Rename Delete Move		Add Delete Move SNMP Refresh Create Update Job Export to CSV Reload Table	Name	Type	Address	Remote Address	Online Status	Last Online	Sub-Group	
<ul style="list-style-type: none"> All Endpoints North East Division North West Division South East Division South West Division Validation 			MCD00E0B36CFF1C	Onsight Expert	192.168.1.41	192.168.1.41	not responding	11/23/2009 3:38:53 PM	- Validation	delete
			MCD0019760322DE	Onsight Expert	192.168.1.86	192.168.1.86	online	6/10/2010 1:32:17 PM	North East Division	delete
			MCD00E0B36CFF18	Onsight Expert	192.168.1.94	192.168.1.94	offline	6/9/2010 2:50:17 PM	- Validation	delete
			MCD00C66B0BA69D	Onsight Device	192.168.1.141	192.168.1.141	online	6/10/2010 1:32:13 PM	North East Division	delete
			MCD00C66B0C6C73	Onsight Device	192.168.1.163	-	online	6/10/2010 1:31:36 PM	- Validation	delete
			LIBRESTR-4B7B54	Onsight Expert	192.168.1.165	192.168.1.165	not responding	3/9/2010 6:15:46 PM	North East Division	delete

Endpoint Discovery

Onsight Management Suite includes a discovery option using SNMP that will search a selected IP range for Onsight endpoints. As new Onsight endpoints are added to a company's network, they will be discovered and automatically registered for endpoint management. The system administrator can configure the range of the IP discovery.

Endpoint Management

Onsight system administrators can create configuration packages, media configuration packages or customized contact lists and distribute these packages to all or select groups of Onsight endpoints. Onsight Management Suite allows system administrators to quickly manage all of the endpoints on the network from a central location and optimize these remote endpoints for local usage. It is also designed to push out regular software update packages to the endpoints. If an endpoint is not online, Onsight Management Suite will track the endpoint and will push the software or configuration updates as soon as it comes online.

Usage Statistics

Onsight Management Suite includes a detailed data collection and export capability to provide access to Onsight session data to use for operational analysis and troubleshooting. The session data collected includes call history, call length, call participants, SIP call ID, call termination reason, call count, and endpoint events such as power-on and power-off. This data can be exported in a CSV file format to bring into reporting or spreadsheet tools.

Scalable Solution

The Onsight Management Suite software is installed on a server and includes a back-up license. Customers can purchase additional endpoint packages to scale up as they deploy more Onsight endpoints.

System Requirements

The software should be installed on a server with these minimum requirements:

Operating System	Windows Server 2003 SP2 (recommended) Windows Server 2008 SP1 ¹ Windows XP Professional SP2 ²
Web Server	IIS 5.1 or higher
Processor speed	1 GHz (1.5 GHz recommended)
Disk space	Up to 120 MB required (if Microsoft .NET Framework components are not already installed). Additional space is required for storage of usage statistics, software and configuration update packages.
Network	A wired 10/100 Ethernet port is recommended.

¹ Installation on Windows Server 2008 requires that your server be configured for the Web Server (IIS) role, with both the ASP.NET and IIS 6 Management Compatibility roles services installed.

² Windows XP Professional SP2 allows only a limited number of simultaneous connections to IIS, and is therefore recommended only for smaller installations or in environments where updates will be applied to only a few remote endpoints at a time.